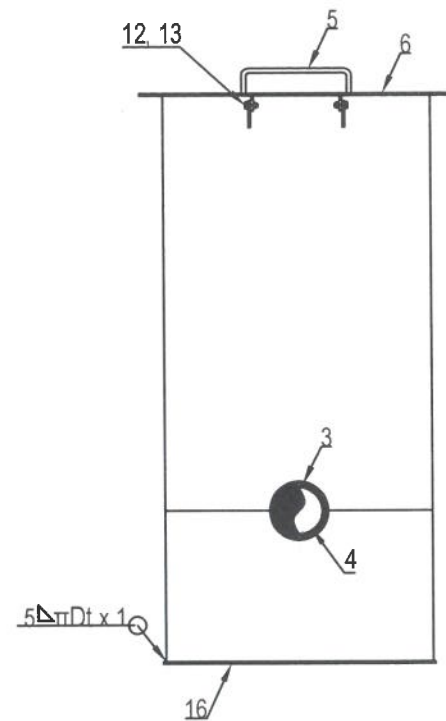
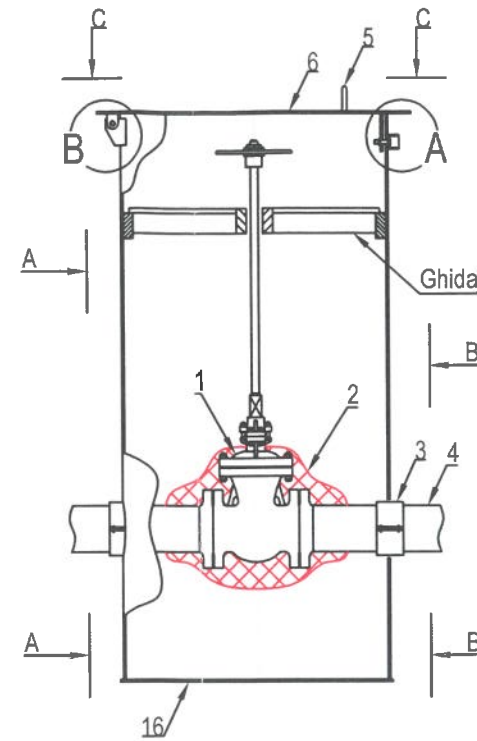


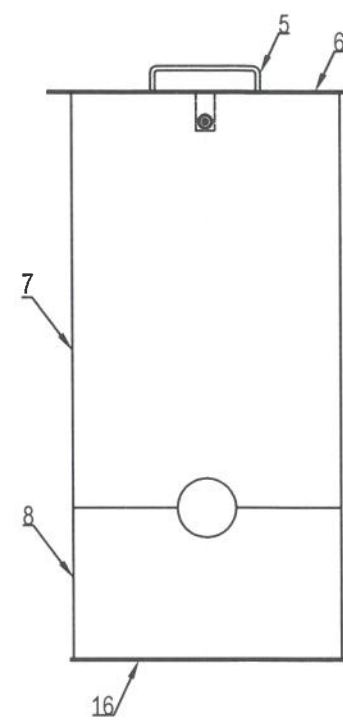
Vedere A - A



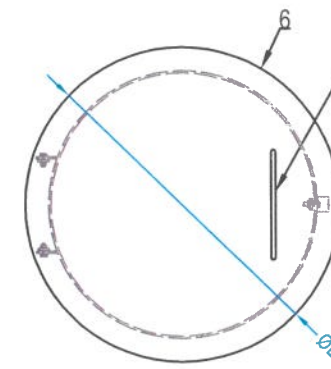
Detaliu izolare ventil si montaj tub protector



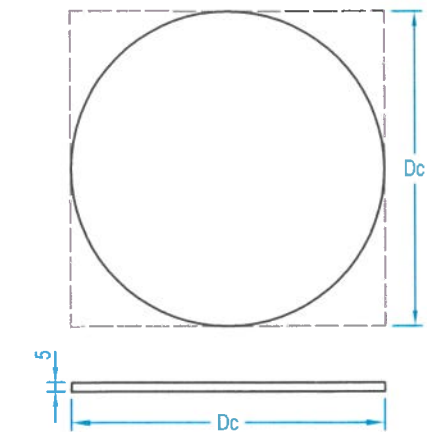
Vedere B - B



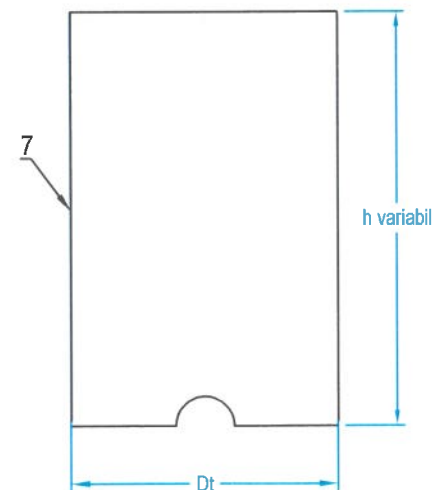
Vedere in plan C - C



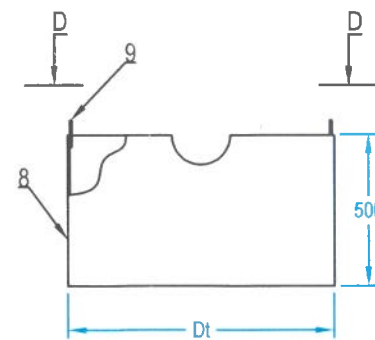
Detaliu "6"



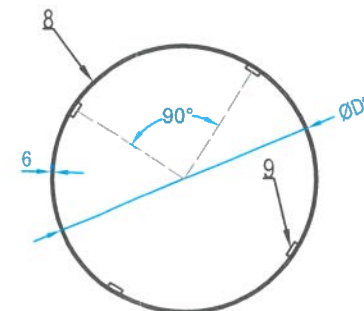
Detaliu tub superior "7"



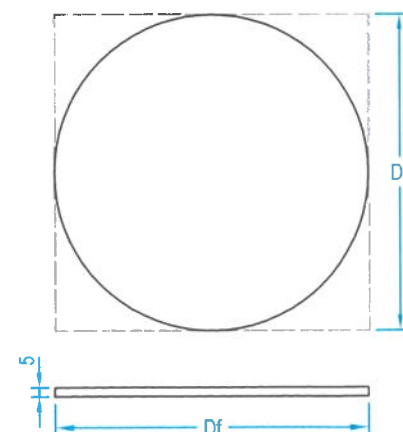
Detaliu tub inferior "8"



Vedere D - D



Detaliu "16"



NOTA:
 Protecția anticorozivă a caminului se va face prin vopsire conform SR EN ISO 12944:2002
 - doua straturi grund epoxidic cu Zn, cu grosime totala strat uscat 75 - 80 μm;
 - vopsea epoxidica clorcauciuc in doua straturi.

Dimensiuni tub protector				
DN ventil	Dt	Grosime tub [mm]	Dc	Df
250	1219	7.1	1291	1291

Poz.	Denumire	Dimensiuni	STAS	Material	Cantitati
1	Robinet cu sertar pana	DN 250		A216 + 13Cr	
2	Mastic izolator		KEBU PLAST MASTIC		
3	Inel distantier			MDPE	2
4	Teava		SR EN ISO 3183:2020	L 360N	
5	Maner	Ø12 x 400mm	SR EN 10060:2004	OL 37.2K	1
6	Capac	Tb. 5mm	SR EN 10029:2011	OL 37.2K	1
7	Manta camin superioara	ØDt x 7.1	SR EN ISO 3183:2020	L 245N	
8	Manta camin inferioara	ØDt x 7.1 x 500mm	SR EN ISO 3183:2020	L 245N	
9	Platbanda ghidare tub	100 x 40 x 5mm	SR EN 10058:2004	OL 37.2K	4
10	Protector surub	Ø1 1/2" x 3.6 x 30mm	STAS 8185:88	OLT 45	1
11	Tabla groasa	100 x 50 x 6mm	SR EN 10058:2004	OL 37.2K	1
12	Surub	M10 x 50	SR EN ISO 4018:2011		3
13	Piulita	M10	SR EN ISO 4034:2013		3
14	Tabla groasa	70 x 55 x 6mm	SR EN 10058:2004	OL 37.2K	2
15	Tabla groasa	40 x 30 x 6mm	SR EN 10058:2004	OL 37.2K	2
16	Fund camin	Tb. 5mm	SR EN 10029:2011	OL 37.2K	1

GREUTATE CAMIN IN FUNCTIE DE INALTIME

Greutate capac camin [Kg]	72.9	72.9	72.9	72.9	72.9	72.9	72.9	72.9	72.9	72.9
Greutate fund camin [Kg]	72.9	72.9	72.9	72.9	72.9	72.9	72.9	72.9	72.9	72.9
Greutate tub pe ml [Kg]	212	212.0	212.0	212.0	212.0	212.0	212.0	212.0	212.0	212.0
H [m]	1.5	2.0	2.5	3.0	3.5	4.0	4.5	5.0	5.5	6.0
Greutate [Kg]	474.8	580.8	686.8	792.8	898.8	1004.8	1110.8	1216.8	1322.8	1428.8

Verificator/Expert	Nume	Semnatura	Cerinta	Referat / Expertiza Nr. / Data
Asocierea S.C. SNIF PROIECT S.A. S.C. ATANASIU & SKILLS S.R.L.				Beneficiar: CONPET S.A. PLOIESTI
Specificatie	Nume	Semnatura	Scara:	Punere în siguranță a conductelor de transport țigăi F1 și F2 Ø10 ¾ Siliște - Ploiești și dezafectarea conductelor vechi-inactive în zona Comășani-Bucșani, la subtraversarea râului Ialomița
Sef proiect	Ing. Atanasiu Dragos			Faza PT+CS+DE
Desenat	Ing. Radu Florin		Data: 2022	Pl. nr. 14
Proiectat	Ing. Costea Paul			Detaliu izolare ventil si montaj tub protector